



**Technical View by Nooresh**  
get the **TECH** edge

# **Insider Trading Report**

## **1<sup>st</sup> November to 10<sup>th</sup> December 2020**

**Insider Trading Quarterly Report–Interesting Ideas to Research @Rs 699 per Quarter or Rs 1999 for a Year**

In our post - [Insider Buying–A good way to hunt for Companies to Research](#), we had looked at some examples about how one can find good ideas to research or to keep on radar for Opportunities.

We have started a small product around it. We keep doing this research for ourselves but have made it in a good format to be useful for all of us.

Do checkout this [Youtube Video](#) too on the topic - <https://www.youtube.com/watch?v=bt5wtR4AJuA>

**Insider Trading Quarterly Report - Rs 699 for a Quarter & 1999 for a Year.**

**What do you Get ?**

**1) A Quarterly Report**

Every quarter we will send out a report which contains a selected list of companies which have seen good insider buying in the current quarter as well as in previous quarters.

Any interesting observations for a stock will be highlighted. A quick technical chart analysis if the stock is showing some major trend change or momentum setup.

Check format of a couple of examples below.

**2) Every Month we will be updating the interesting Insider Buying Actions and sending it**

The stocks are not buy/sell recommendations but companies which deserved to be research. So please do your own research and due diligence.

Its a report to help you in Company Ideas to research or keep on radar.

Source of data – [www.bseindia.com](http://www.bseindia.com)

[Quarterly Report Payment Link - https://imjo.in/Mzmttdt](https://imjo.in/Mzmttdt)

[For Annual Subscription – Insider Trading Quarterly Report - https://imjo.in/JtdFVs](https://imjo.in/JtdFVs)

After payment we will send the report in a few hours. If any issues mail us on [nooreshtech@analyseindia.com](mailto:nooreshtech@analyseindia.com) or [harsh@analyseindia.com](mailto:harsh@analyseindia.com)

Please do send us your suggestions to improve the product. [nooreshtech@analyseindia.com](mailto:nooreshtech@analyseindia.com)

**Insider Trading - Nov 1 to Dec 10 - [www.nooreshtech.co.in](http://www.nooreshtech.co.in)**

Company Name	Shares Acquired	Value Acquired (Cr.)	Rate	% Acquired
Tokyo Plast International Ltd.	506054	3.1	61	5.36
Bharti Infratel Ltd.	133000000	2882.3	217	4.93
Pioneer Embroideries Ltd	1034766	2.3	22	4.15
Amj Land Holdings Ltd	1596533	3.1	20	3.89
Filatex India Ltd	8850725	27.9	31	3.86
Trident Ltd.	160000000	122.6	8	3.13
Tata Chemicals Ltd.	6393198	276.0	432	2.51
Natural Capsules Ltd.	273778	2.2	80	2.2
Veto Switchgears And Cables Ltd	291000	1.8	61	1.49
Panama Petrochem Ltd.	811563	6.1	75	1.34
Rushil Decor Ltd.	200813	1.8	90	1.01
Hfcl Ltd	11250000	19.8	18	0.89
Ashapura Minechem Ltd.	103000	0.8	75	0.86
Greaves Cotton Ltd.	1925778	14.2	74	0.83
Ganesha Ecosphere Ltd.	178569	5.3	297	0.81
Confidence Petroleum India Ltd.	2183413	4.7	21	0.8
Sahyadri Industries Ltd.	72750	2.0	270	0.76
Thangamayil Jewellery Ltd	103579	4.8	465	0.75
Asian Granito India Ltd.	215000	6.5	302	0.71
Just Dial Ltd.	376785	23.0	611	0.61
Godrej Industries Ltd.	1763253	72.0	408	0.52
Onward Technologies Ltd.	20000	0.1	69	0.25
Power Mech Projects Ltd	74960	3.0	396	0.51
Gravita India Ltd.	326833	1.5	47	0.47
Shree Pushkar Chemicals & Fertilisers Ltd	142513	1.4	99	0.46
Commercial Syn Bags Ltd	55330	0.3	62	0.46
Hatsun Agro Product Ltd.	625000	51.6	825	0.39
Apollo Pipes Ltd	50000	2.0	393	0.38
Dhunseri Tea & Industries Ltd	24835	0.7	266	0.36
Jagsonpal Pharmaceuticals Ltd.	92709	0.6	62	0.35
Madhav Marbles & Granites Ltd.	28454	0.1	29	0.33
Bright Brothers Ltd	17402	0.1	67	0.31
Mangalore Chemicals & Fertilizers Ltd.	363346	1.2	34	0.31
Vardhman Special Steels Ltd.	118309	1.1	94	0.3
Rama Steel Tubes Ltd	48591	0.2	47	0.29
Amal Ltd.	27365	0.5	175	0.29
Wpil Ltd.	26202	1.2	459	0.26
Investment & Precision Castings Ltd.	12640	0.2	154	0.26
Godfrey Phillips India Ltd.	129671	11.5	889	0.25

Company Name	Shares Acquired	Value Acquired (Cr.)	Rate	% Acquired
Nrb Bearings Ltd.	292369	2.4	83	0.25
Vardhman Textiles Ltd.	140827	12.4	882	0.25
Jindal Drilling & Industries Ltd.	67000	0.5	77	0.23
Man Infraconstruction Ltd.	300000	0.9	30	0.2
Repro India Ltd.	22349	0.8	359	0.19
Greenply Industries Ltd.	217973	2.0	93	0.18
Chembond Chemicals Ltd	20754	0.3	160	0.17
Surya Roshni Ltd.	100600	2.5	251	0.17
Ador Fontech Ltd	61400	0.2	32	0.17
Firstsource Solutions Ltd.	1138249	8.2	72	0.16
Bhageria Industries Ltd	65905	0.9	131	0.15
Kriti Industries (India) Ltd	70990	0.2	33	0.14
Sarla Performance Fibers Ltd	110000	0.2	19	0.14
Cantabil Retail India Ltd.	21807	0.7	337	0.12
Pudumjee Paper Products Ltd	112248	0.2	19	0.12
Everest Organics Ltd.	8682	0.2	228	0.11
Chalet Hotels Ltd	228381	3.8	165	0.11
Texmaco Infrastructure & Holdings Ltd.	138964	0.5	40	0.11
Nicco Parks & Resorts Ltd	50417	0.2	47	0.11

## Tokyo Plast International Ltd.

Tokyo Plast International is engaged in the business of Manufacturers of Plastic Thermoware Products.

Market Cap - ₹ 64.6 Cr.

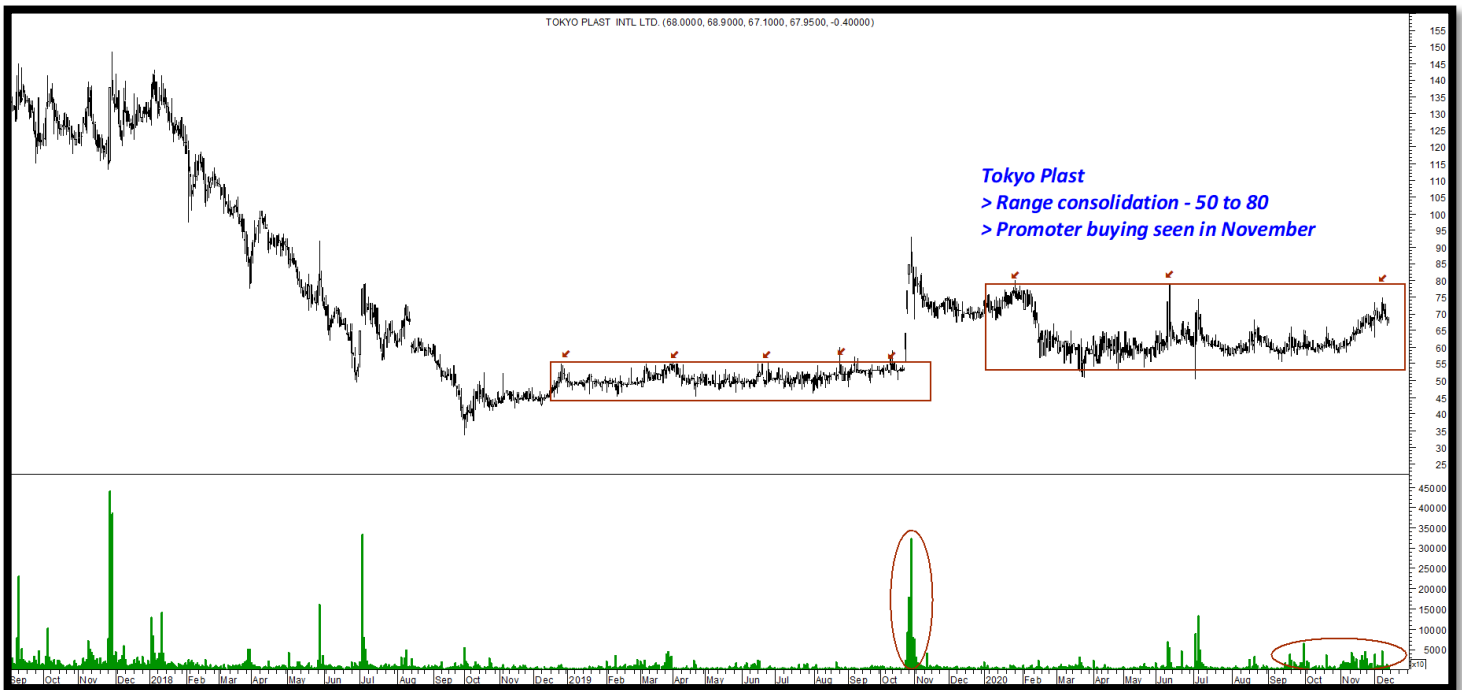
### Promoter buying details

Company Name	Shares Acquired	Value Acquired (Cr.)	Rate	% Acquired
Tokyo Plast International Ltd.	506054	3.1	61	5.36

### Promoter Past Shareholding

Company Name	Dec-15	Dec-16	Dec-17	Dec-18	Dec-19	Mar-20	Jun-20	Sep-20
Tokyo Plast International Limited	51.72	51.72	51.72	52.44	61.37	61.37	61.37	61.22

### Technical Chart



### Observations

- Promoter buying almost 5% from open market

## Bharti Infratel Ltd.

Bharti Infratel is engaged in the business of object of, inter-alia, setting up, operating and maintaining wireless communication towers.

Market Cap - ₹ 65,999 Cr.

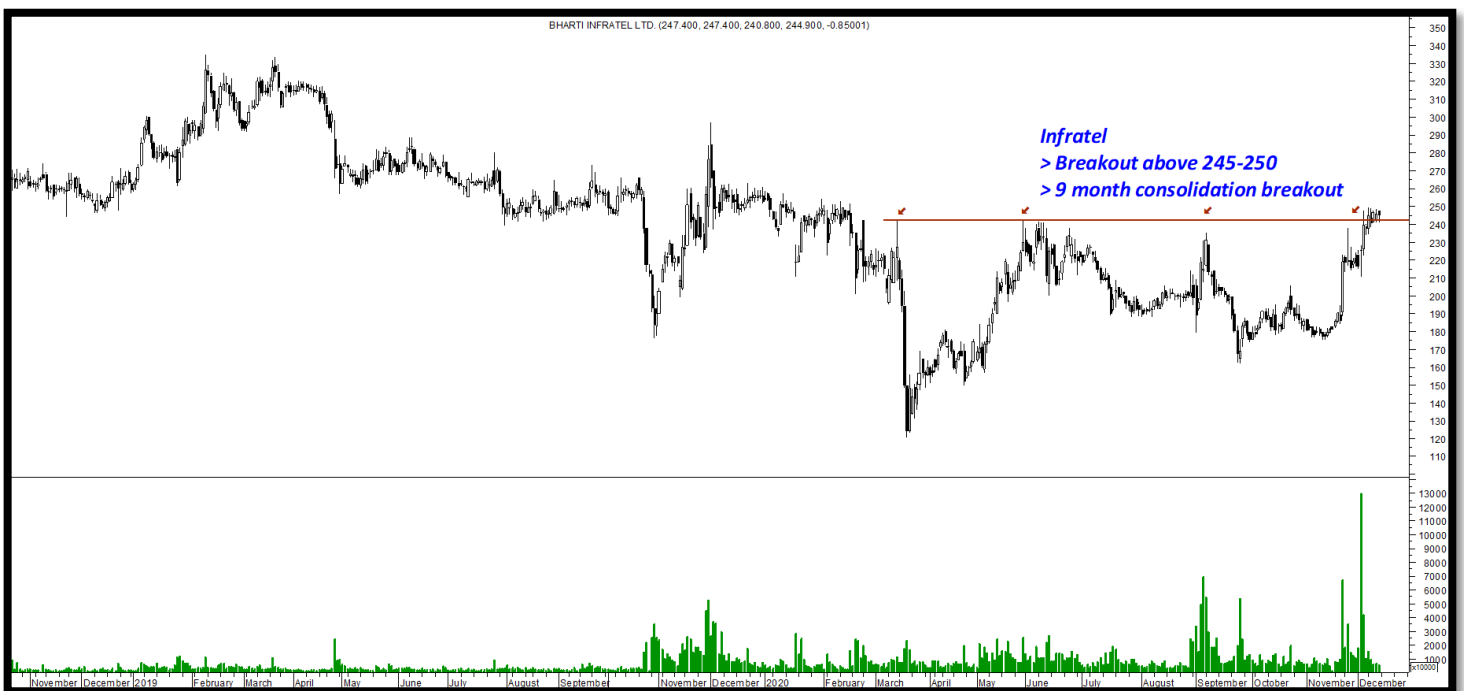
### Promoter buying details

Company Name	Shares Acquired	Value Acquired (Cr.)	Rate	% Acquired
Bharti Infratel Ltd.	133000000	2882.3	217	4.93

### Promoter Past Shareholding

Company Name	Dec-15	Dec-16	Dec-17	Dec-18	Dec-19	Mar-20	Jun-20	Sep-20
Bharti Infratel Limited	71.7	71.96	53.51	53.51	53.51	53.51	53.51	53.51

### Technical Chart



### Observations

- Promoter bought 4.93% from open market
- Name Changed to Indus towers

## Pioneer Embroideries Ltd

Pioneer Embroideries Limited is one of the largest manufacturer-exporter of Embroideries, Torchon/Bobbin laces, Raschel laces and other garment accessories. It owns retail brand for embroidered clothing "Hakoba".

Market Cap - ₹ 70.7 Cr.

### Promoter buying details

Company Name	Shares Acquired	Value Acquired (Cr.)	Rate	% Acquired
Pioneer Embroideries Ltd	1034766	2.3	22	4.15

### Promoter Past Shareholding

Company Name	Dec-15	Dec-16	Dec-17	Dec-18	Dec-19	Mar-20	Jun-20	Sep-20
Pioneer Embroideries Limited	46.17	34.27	27.38	26.39	27.27	25.91	25.91	25.91

### Technical Chart



### Observations

- Promoter bought 4.15% from open market

## Amj Land Holdings Ltd

AMJ Land Holdings is primarily engaged in the business of real estate development, leasing and wind power.

Market Cap - ₹ 106 Cr

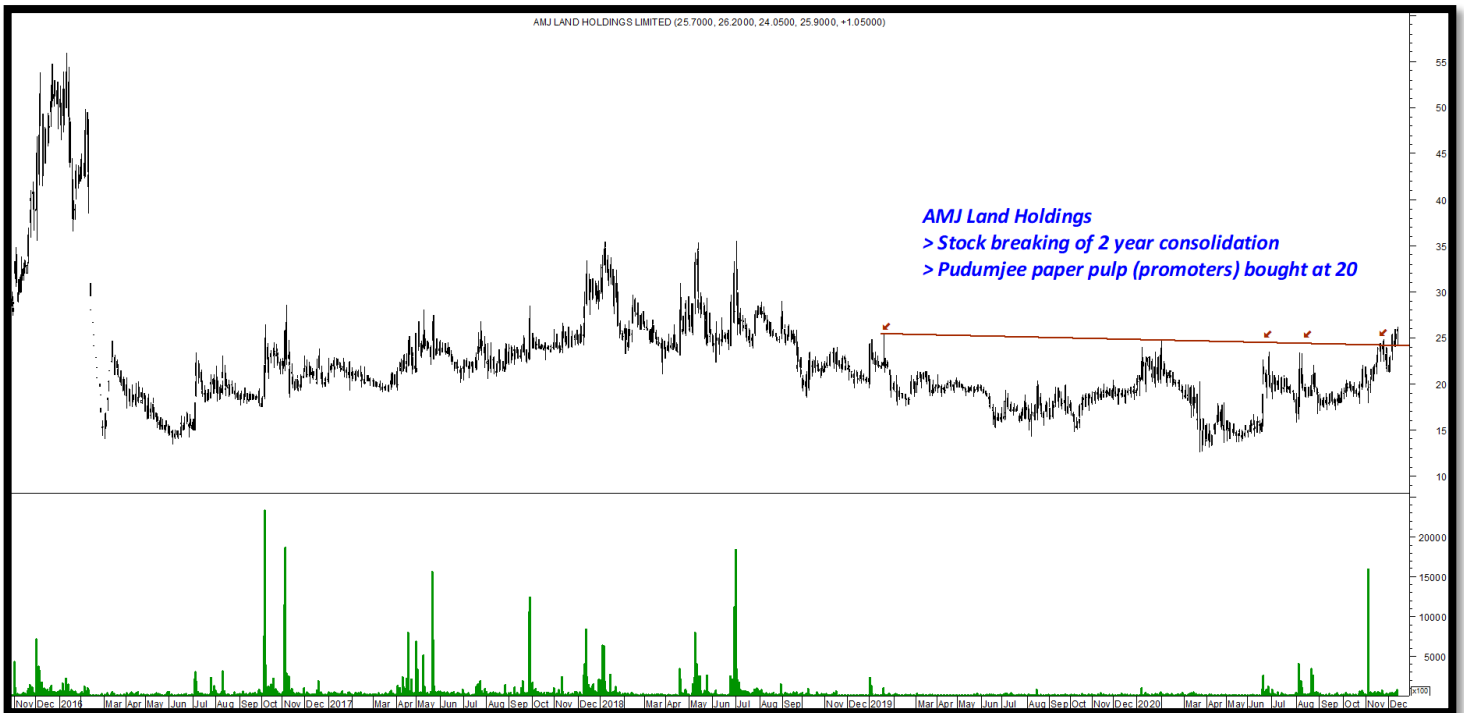
### Promoter buying details

Company Name	Shares Acquired	Value Acquired (Cr.)	Rate	% Acquired
Amj Land Holdings Ltd	1596533	3.1	20	3.89

### Promoter Past Shareholding

Company Name	Dec-15	Dec-16	Dec-17	Dec-18	Dec-19	Mar-20	Jun-20	Sep-20
Amj Land Holdings Limited	61.51	61.51	61.51	61.75	61.75	61.75	61.75	61.96

### Technical Chart



### Observations

- Promoter (Pudumjee Paper Products Ltd & PACs) bought 3.89%
- However Halan Properties Pvt Ltd (Non promoter entity) sold 3.73%



## Filatex India Ltd.

Filatex India is manufacturer of Polyester Chips, Polyester/Nylon/Polypropylene Multi & Mono Filament Yarn and Narrow Fabrics.

Market Cap - ₹ 869 Cr.

### Promoter buying details

Company Name	Shares Acquired	Value Acquired (Cr.)	Rate	% Acquired
Filatex India Ltd	8850725	27.9	31	3.86

### Promoter Past Shareholding

Company Name	Dec-15	Dec-16	Dec-17	Dec-18	Dec-19	Mar-20	Jun-20	Sep-20
Filatex India Limited	62.58	57.99	57.99	58.08	59.73	60.6	60.46	60.47

### Technical Chart



### Observations

- Constant promoter buying seen in November month

## Trident Ltd.

Trident is engaged in manufacturing, trading and selling of Textiles (Yarn, Terry Towels & Bedsheets) and Paper & Chemicals.

Market Cap - ₹ 5,020 Cr.

### Promoter buying details

Company Name	Shares Acquired	Value Acquired (Cr.)	Rate	% Acquired
Trident Ltd.	160000000	122.6	8	3.13

### Promoter Past Shareholding

Company Name	Dec-15	Dec-16	Dec-17	Dec-18	Dec-19	Mar-20	Jun-20	Sep-20
Trident Limited	66.56	67.77	67.77	70.77	71.06	71.06	71.07	71.84

### Technical Chart



### Observations

- Promoter bought 6cr shares and Employee Welfare Trust bought 10cr shares in November

## Tata Chemicals Ltd.

Tata Chemicals engages in the manufacture of inorganic chemistry products with plants spread across four continents America, Europe, Africa and Asia. It is worlds third largest Soda Ash and Indias leading vacuum evaporated iodised salt producer. Their salt works, spread over 36,000 acres, are the largest in Asia.

Market Cap - ₹ 12,946 Cr.

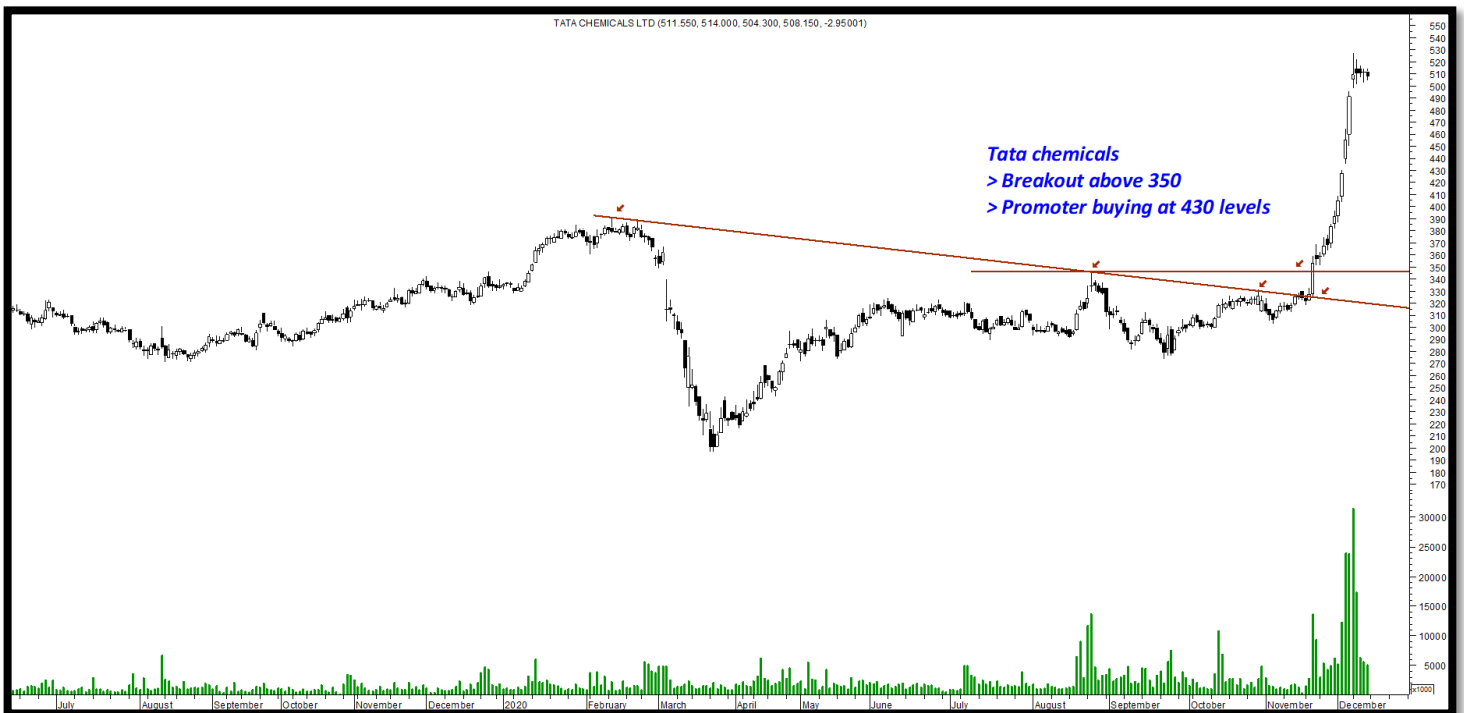
### Promoter buying details

Company Name	Shares Acquired	Value Acquired (Cr.)	Rate	% Acquired
Tata Chemicals Ltd.	6393198	276.0	432	2.51

### Promoter Past Shareholding

Company Name	Dec-15	Dec-16	Dec-17	Dec-18	Dec-19	Mar-20	Jun-20	Sep-20
Tata Chemicals Limited	30.98	30.8	30.8	30.63	31.08	34.59	34.59	35.47

### Technical Chart



### Observations

- Promoter bought 2.5% stake at around 430-435 levels

## Natural Capsules Ltd.

Natural Capsules is engaged in the Business of E.G.H Capsules

Market Cap ₹ 49.9 Cr.

### Promoter buying details

Company Name	Shares Acquired	Value Acquired (Cr.)	Rate	% Acquired
Natural Capsules Ltd.	273778	2.2	80	2.2

### Promoter Past Shareholding

Company Name	Dec-15	Dec-16	Dec-17	Dec-18	Dec-19	Mar-20	Jun-20	Sep-20
NATURAL CAPSULES LTD.	48.54	52.17	52.17	52.17	52.17	52.17	52.17	52.17

### Technical Chart



### Observations

- Promoter bought 2.2% from open market

## Veto Switchgears And Cables Ltd.

Veto Switchgears is engaged in manufacturing of wires & cables, Electrical Accessories & all type of range of led lighting, CFL & Fans.

Market Cap - ₹ 160 Cr.

### Promoter buying details

Company Name	Shares Acquired	Value Acquired (Cr.)	Rate	% Acquired
Veto Switchgears And Cables Ltd	291000	1.8	61	1.49

### Promoter Past Shareholding

Company Name	Dec-15	Dec-16	Dec-17	Dec-18	Dec-19	Mar-20	Jun-20	Sep-20
Veto Switchgears And Cables Limited	71.76	58.19	45.94	50.07	54.22	54.22	54.22	54.22

### Technical Chart



### Observations

- Promoter bought 291,000 or 1.49% in November month

## Panama Petrochem Ltd.

Panama Petrochem is engaged in the manufacture of specialty petroleum products for diverse user industries like printing, textiles, rubber, pharmaceuticals, cosmetics, power and other industrial oil.

Market Cap - ₹ 595 Cr

### Promoter buying details

Company Name	Shares Acquired	Value Acquired (Cr.)	Rate	% Acquired
Panama Petrochem Ltd.	811563	6.1	75	1.34

### Promoter Past Shareholding

Company Name	Dec-15	Dec-16	Dec-17	Dec-18	Dec-19	Mar-20	Jun-20	Sep-20
Panama Petrochem Limited	70.21	71.02	71.13	68.8	72.82	70.12	68.99	71.27

### Technical Chart



### Observations

- Various promoters bought 8.1k shares or 1.34% in last month at average price of 75

## Rushil Decor Ltd.

Rushil Decor is primarily engaged in manufacturing and sale of Laminate Sheets, Medium Density Fibre Board, Prelaminated Medium Density Fibre Board boards, Polyvinyl Chloride Board, Particle Board.

Market Cap - ₹ 211 Cr.

### Promoter buying details

Company Name	Shares Acquired	Value Acquired (Cr.)	Rate	% Acquired
Rushil Decor Ltd.	200813	1.8	90	1.01

### Promoter Past Shareholding

Company Name	Dec-15	Dec-16	Dec-17	Dec-18	Dec-19	Mar-20	Jun-20	Sep-20
Rushil Decor Limited	55.91	54.8	54.01	52.85	53.24	53.24	53.24	53.24

### Technical Chart



### Observations

- Promoter bought 1.01% stake at 90 after which the price shot up

## Hfcl Ltd.

HFCL is engaged in the business of diverse telecom infrastructure enabler with active interest spanning telecom infrastructure development, system integration, and manufacture and supply of high-end telecom equipment, Optic Fiber and Optic Fiber Cable (OFC).

Market Cap - ₹ 2,806 Cr.

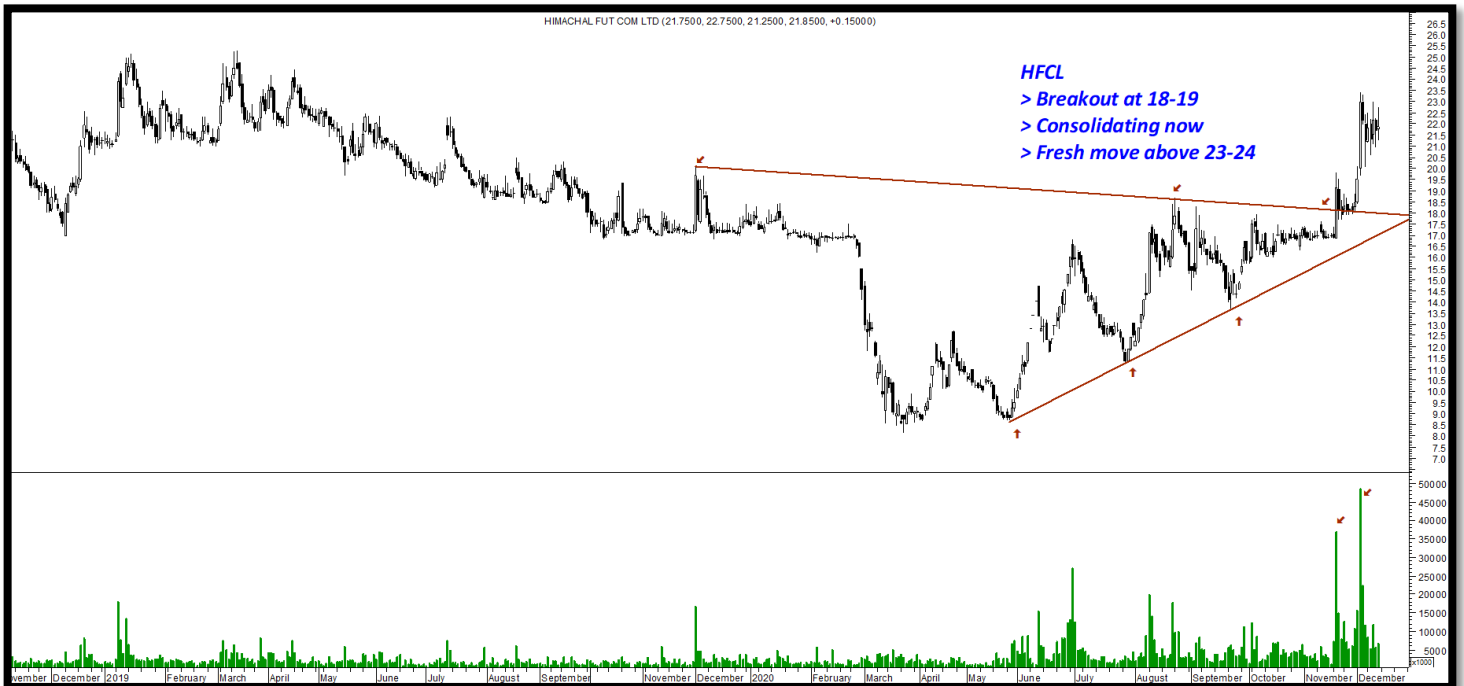
### Promoter buying details

Company Name	Shares Acquired	Value Acquired (Cr.)	Rate	% Acquired
Hfcl Ltd	11250000	19.8	18	0.89

### Promoter Past Shareholding

Company Name	Dec-15	Dec-16	Dec-17	Dec-18	Dec-19	Mar-20	Jun-20	Sep-20
HFCL Limited	38.97	38.97	38.3	38.67	38.13	38.64	38.64	39.73

### Technical Chart



### Observations

- Promoter bought 1.46% in Oct and 0.89% in Nov 2020



## Ashapura Minechem Ltd.

Ashapura Minechem is engaged in the mining, manufacturing and trading of various minerals and its derivative products.

Market Cap - ₹ 691 Cr.

### Promoter buying details

Company Name	Shares Acquired	Value Acquired (Cr.)	Rate	% Acquired
Ashapura Minechem Ltd.	103000	0.8	75	0.86

### Promoter Past Shareholding

Company Name	Dec-15	Dec-16	Dec-17	Dec-18	Dec-19	Mar-20	Jun-20	Sep-20
Ashapura Minechem Limited	48.66	48.43	39.78	39.78	39.78	39.78	39.78	40.36

### Technical Chart



### Observations

- Promoter bought 0.58% in Sep quarter and 0.86% in November 2020 at an average price of 75
- Family disputes have settled and also Company has regained control of its lost subsidiaries

## Greaves Cotton Ltd.

Greaves Cotton is engaged in manufacturing of engines, engine applications and trading of power tillers, spares related to engines, electric vehicles and infrastructure equipment etc

Market Cap - ₹ 1,931 Cr.

### Promoter buying details

Company Name	Shares Acquired	Value Acquired (Cr.)	Rate	% Acquired
Greaves Cotton Ltd.	1925778	14.2	74	0.83

### Promoter Past Shareholding

Company Name	Dec-15	Dec-16	Dec-17	Dec-18	Dec-19	Mar-20	Jun-20	Sep-20
Greaves Cotton Limited	51	51	51	51.65	54.81	54.82	54.82	54.82

### Technical Chart



### Observations

- Promoter bought 0.83% in November month
- Smallcap world fund owns 1.29 cr shares as on Sep 2020, out of which they sold 65lakh shares in November 2020. Total selling seems to be over as per the volumes.

## Ganesh Ecosphere Ltd.

Ganesh Ecosphere is engaged in the business of manufacturing of Recycled Polyester Staple Fibre (RPSF), Spun Yarn and Dyed Texturised Yarn.

Market Cap - ₹ 718 Cr.

### Promoter buying details

Company Name	Shares Acquired	Value Acquired (Cr.)	Rate	% Acquired
Ganesh Ecosphere Ltd.	178569	5.3	297	0.81

### Promoter Past Shareholding

Company Name	Dec-15	Dec-16	Dec-17	Dec-18	Dec-19	Mar-20	Jun-20	Sep-20
Ganesh Ecosphere Limited	45.35	45.35	45.35	39.86	40.13	40.36	40.37	40.91

### Technical Chart



### Observations

- Promoter had acquired 0.5% in Sep quarter and have acquired 0.81% in November month at avg price of 297

## Confidence Petroleum India Ltd.

Confidence Petroleum India Limited is an India-based manufacturer of liquefied petroleum gas (LPG) cylinders for domestic, as well as commercial use.

Market Cap - ₹ 830 Cr.

### Promoter buying details

Company Name	Shares Acquired	Value Acquired (Cr.)	Rate	% Acquired
Confidence Petroleum India Ltd.	386000	1.09	28.37	0.15

### Promoter Past Shareholding

Company Name	Dec-15	Dec-16	Dec-17	Dec-18	Dec-19	Mar-20	Jun-20	Sep-20
Confidence Petroleum India Limited	46.32	49.47	53.71	51.56	52.85	53.59	53.67	54.16

### Technical Chart



### Observations

- Promoter acquired 0.5% in Sep quarter and added another 0.15% in November 2020

## Sahyadri Industries Ltd.

Sahyadri Industries is engaged in engaged in the business of Fibre Cement Products.

Market Cap - ₹ 260 Cr.

### Promoter buying details

Company Name	Shares Acquired	Value Acquired (Cr.)	Rate	% Acquired
Sahyadri Industries Ltd.	72750	2.0	270	0.76

### Promoter Past Shareholding

Company Name	Dec-15	Dec-16	Dec-17	Dec-18	Dec-19	Mar-20	Jun-20	Sep-20
SAHYADRI INDUSTRIES LTD.	0	66.44	66.44	66.41	66.41	66.41	66.41	66.41

### Technical Chart



### Observations

- Promoter bought 0.76% in November month

## Thangamayil Jewellery Ltd.

Thangamayil Jewellery is engaged in Business of Gold & Silver and precious metals.

Market Cap - ₹ 742 Cr.

### Promoter buying details

Company Name	Shares Acquired	Value Acquired (Cr.)	Rate	% Acquired
Thangamayil Jewellery Ltd	103579	4.8	465	0.75

### Promoter Past Shareholding

Company Name	Dec-15	Dec-16	Dec-17	Dec-18	Dec-19	Mar-20	Jun-20	Sep-20
Thangamayil Jewellery Limited	70.35	70.35	66.44	66.46	67.43	67.44	67.47	69.01

### Technical Chart



### Observations

- Promoter bought 0.75% in November month
- Also 1.54% added in previous quarter

## Asian Granito India Ltd.

Asian Granito India is engaged in the business of manufacturing of tiles. The Company offers tiles, such as wall and ceramics, and marble and quartz. The Company manufactures various types of vitrified tiles, including glazed and polished in over 1,200 designs.

Market Cap - ₹ 888 Cr

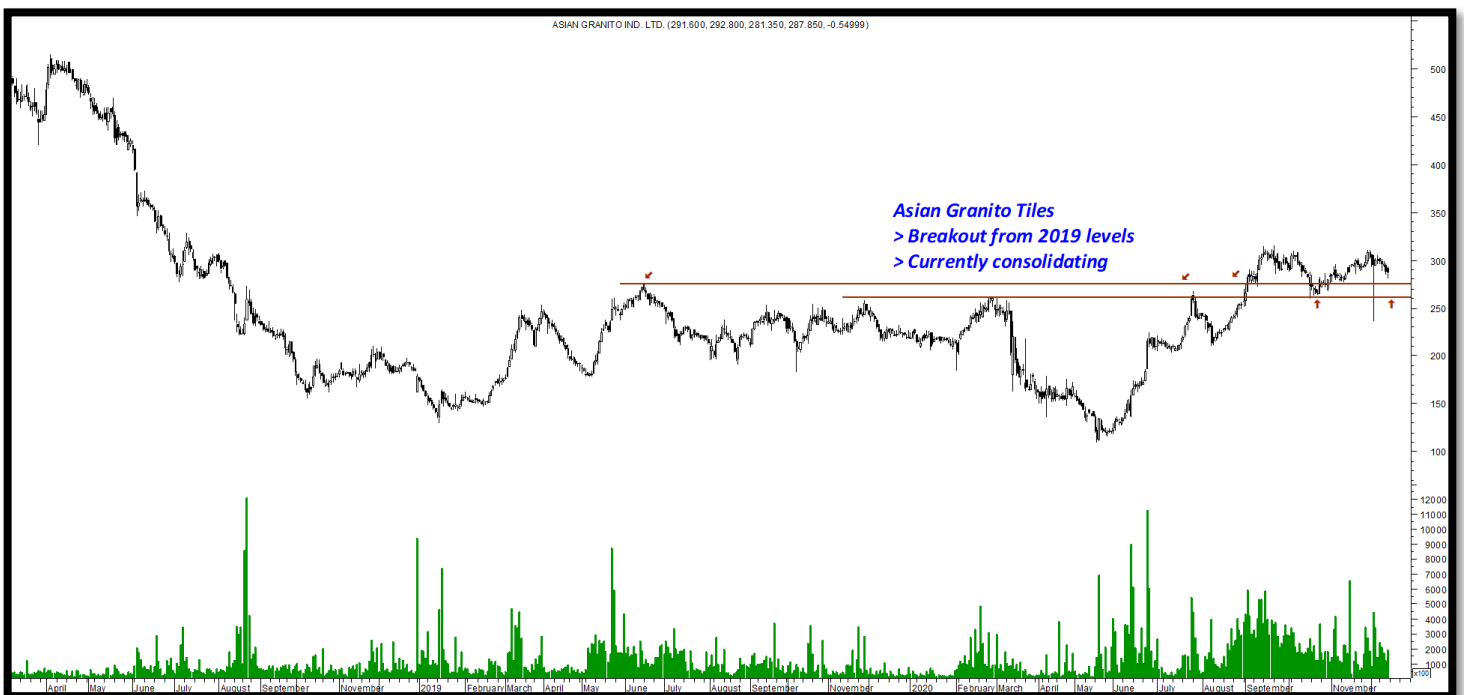
### Promoter buying details

Company Name	Shares Acquired	Value Acquired (Cr.)	Rate	% Acquired
Asian Granito India Ltd.	215000	6.5	302	0.71

### Promoter Past Shareholding

Company Name	Dec-15	Dec-16	Dec-17	Dec-18	Dec-19	Mar-20	Jun-20	Sep-20
Asian Granito India Limited	37.52	28.16	32.66	32.42	34.08	33.72	34.08	33.25

### Technical Chart



### Observations

- Some promoter sold, some bought, net acquisition 2.15lk shares

## Just Dial Ltd.

Just Dial is engaged in the business of providing local search, search related services and software services to users in India through multiple platforms such as the internet, mobile internet, over the telephone (voice), text (SMS)

Market Cap - ₹ 3,762 Cr.

### Promoter buying details

Company Name	Shares Acquired	Value Acquired (Cr.)	Rate	% Acquired
Just Dial Ltd.	376785	23.0	611	0.61

### Promoter Past Shareholding

Company Name	Dec-15	Dec-16	Dec-17	Dec-18	Dec-19	Mar-20	Jun-20	Sep-20
Just Dial Limited	32.58	33.29	34.24	33.76	32.95	33.44	33.42	32.95

### Technical Chart



### Observations

- Promoter bought 0.61%



## Godrej Industries Ltd.

Godrej Industries is engaged in the business of Chemicals, Agri Inputs, Estate and Property Development, Vegetable Oil, Finance and Investments, Dairy, Animal Feeds, and other related activities.

Market Cap - ₹ 15,233 Cr.

### Promoter buying details

Company Name	Shares Acquired	Value Acquired (Cr.)	Rate	% Acquired
Godrej Industries Ltd.	1763253	72.0	408	0.52

### Promoter Past Shareholding

Company Name	Dec-15	Dec-16	Dec-17	Dec-18	Dec-19	Mar-20	Jun-20	Sep-20
Godrej Industries Limited	74.81	74.77	74.74	74.72	61.39	62.21	64.2	64.96

### Technical Chart



### Observations

- Promoter stake gone up from 61.39% to 64.96% in last 3-4 quarters
- More addition in last month

## Onward Technologies Ltd.

Onward Technologies is a leading global player in Mechanical Engineering Design and IT consulting, and the holding company.

Market Cap - ₹ 112 Cr

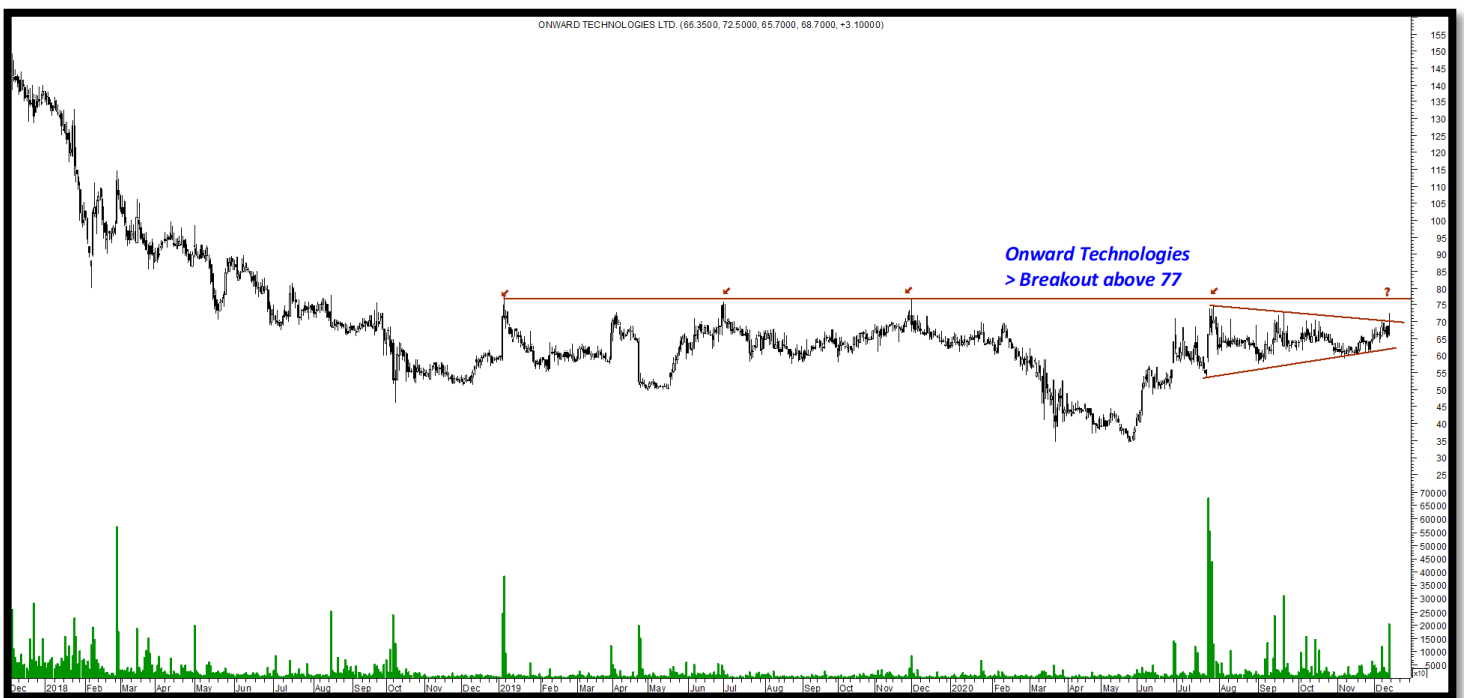
### Promoter buying details

Company Name	Shares Acquired	Value Acquired (Cr.)	Rate	% Acquired
Onward Technologies Ltd.	20000	0.14	69	0.25

### Promoter Past Shareholding

Company Name	Dec-15	Dec-16	Dec-17	Dec-18	Dec-19	Mar-20	Jun-20	Sep-20
Onward Technologies Limited	64.91	65.41	55.24	59.18	61.56	62.2	62.21	61.84

### Technical Chart



### Observations

- Promoter nibbling in stock
- Good chart formation

## Power Mech Projects Ltd.

Power Mech Projects Limited operates as an engineering and construction company, which provides erection, testing and commissioning (ETC), civil and operation and maintenance services for power projects.

Market Cap - ₹ 620 Cr.

### Promoter buying details

Company Name	Shares Acquired	Value Acquired (Cr.)	Rate	% Acquired
Power Mech Projects Ltd	74960	3.0	396	0.51

### Promoter Past Shareholding

Company Name	Dec-15	Dec-16	Dec-17	Dec-18	Dec-19	Mar-20	Jun-20	Sep-20
Power Mech Projects Limited	64.75	65.08	64.14	63.19	62.5	62.5	62.57	62.58

### Technical Chart



### Observations

- Vantage equity funds hold 4.28%
- Promoter added 0.51% stake in Nov. 2020

## Gravita India Ltd.

Gravita India Limited is engaged in trading lead alloys and lead value added products.

Market Cap - ₹ 372 Cr.

### Promoter buying details

Company Name	Shares Acquired	Value Acquired (Cr.)	Rate	% Acquired
Gravita India Ltd.	326833	1.5	47	0.47

### Promoter Past Shareholding

Company Name	Dec-15	Dec-16	Dec-17	Dec-18	Dec-19	Mar-20	Jun-20	Sep-20
Gravita India Limited	73.22	73.06	72.81	72.77	72.51	72.51	72.51	72.51

### Technical Chart



### Observations

- Employee welfare trust bought 0.47% in the company

## Shree Pushkar Chemicals & Fertilisers Ltd.

Shree Pushkar Chemicals & Fertilisers Ltd is engaged in the business of manufacturing and trading of chemicals, dyes and dyes intermediate, cattle feeds, fertilizers and soil conditioner.

Market Cap - ₹ 357 Cr.

### Promoter buying details

Company Name	Shares Acquired	Value Acquired (Cr.)	Rate	% Acquired
Shree Pushkar Chemicals & Fertilisers Ltd	142513	1.4	99	0.46

### Promoter Past Shareholding

Company Name	Dec-15	Dec-16	Dec-17	Dec-18	Dec-19	Mar-20	Jun-20	Sep-20
Shree Pushkar Chemicals & Fertilisers Limited	60.27	61.6	63	64.88	65.03	65.25	65.28	66.5

### Technical Chart



### Observations

- Promoter bought 0.46% at an average price of 99-100

## Commercial Syn Bags Ltd.

Commercial Syn Bags Limited is an India-based company, which is engaged in the manufacture of plastic articles for the packing of goods (plastic bags, sacks, containers, boxes, cases, carboys and bottles).

Market Cap - ₹ 74.8 Cr.

### Promoter buying details

Company Name	Shares Acquired	Value Acquired (Cr.)	Rate	% Acquired
Commercial Syn Bags Ltd	55330	0.3	62	0.46

### Promoter Past Shareholding

Company Name	Dec-15	Dec-16	Dec-17	Dec-18	Dec-19	Mar-20	Jun-20	Sep-20
Commercial Syn Bags Ltd	0	0	0	0	56.05	57.74	58.04	58.44

### Technical Chart



### Observations

- Illiquid stock
- Near all time high

## Hatsun Agro Product Ltd.

Hatsun Agro Product is principally engaged in the business of processing and marketing of milk, milk products and ice cream

Market Cap - ₹ 17,360 Cr.

### Promoter buying details

Company Name	Shares Acquired	Value Acquired (Cr.)	Rate	% Acquired
Hatsun Agro Product Ltd.	625000	51.6	825	0.39

### Promoter Past Shareholding

Company Name	Dec-15	Dec-16	Dec-17	Dec-18	Dec-19	Mar-20	Jun-20	Sep-20
Hatsun Agro Product Limited	74.71	74.71	72.51	73.54	73.58	73.58	73.58	73.68

### Technical Chart



### Observations

- Promoter acquired 0.39% at 825

## Apollo Pipes Ltd.

Apollo Pipes is engaged in the manufacturing and trading of PVC Pipes and Fittings

Market Cap - ₹ 853 Cr

### Promoter buying details

Company Name	Shares Acquired	Value Acquired (Cr.)	Rate	% Acquired
Apollo Pipes Ltd	50000	2.0	393	0.38

### Promoter Past Shareholding

Company Name	Dec-15	Dec-16	Dec-17	Dec-18	Dec-19	Mar-20	Jun-20	Sep-20
Apollo Pipes Limited	35.19	35.19	54.67	42.14	47.11	47.11	52.03	52.03

### Technical Chart



### Observations

- Employee welfare trust bought 1 lk shares, however promoter Saket agarwal sold 50k shares in November 2020



## Dhunseri Tea & Industries Ltd.

Dhunseri Tea & Industries Ltd is engaged in cultivation, manufacture and sale of tea

Market Cap - ₹ 185 Cr.

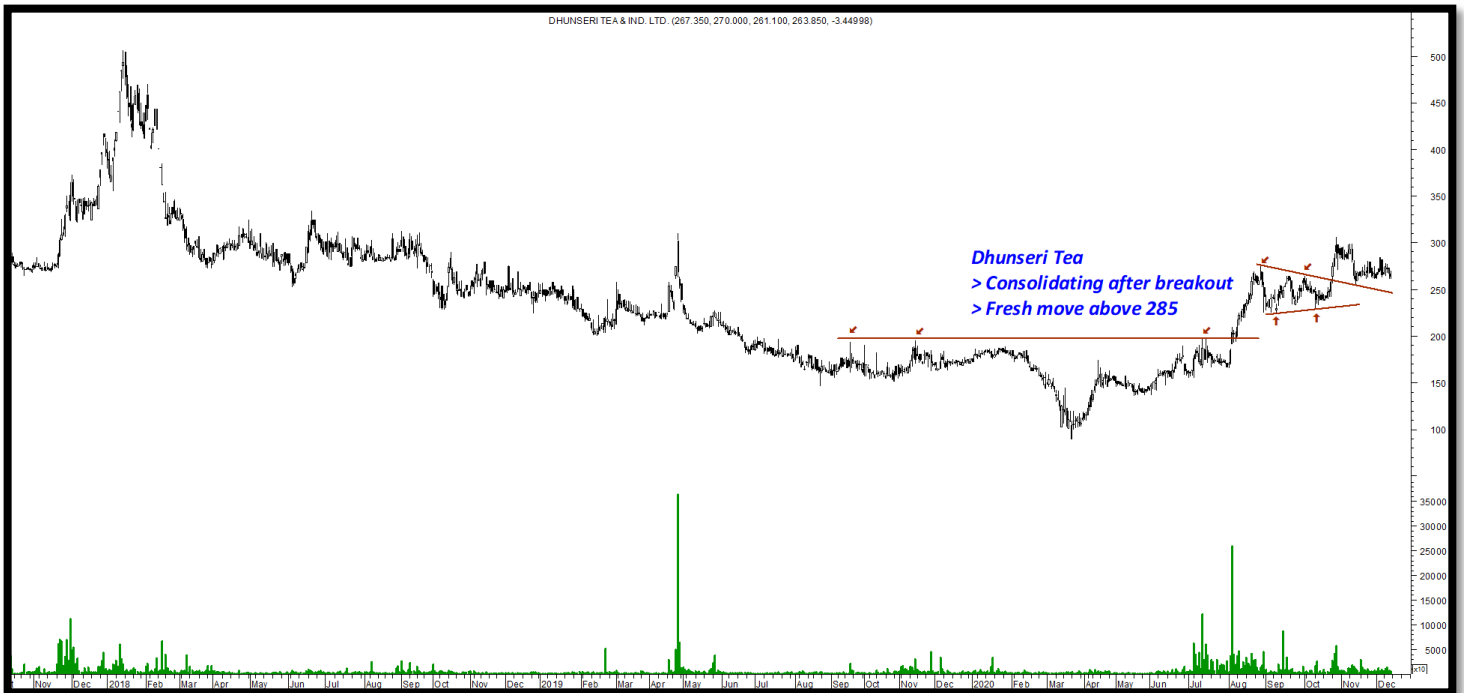
### Promoter buying details

Company Name	Shares Acquired	Value Acquired (Cr.)	Rate	% Acquired
Dhunseri Tea & Industries Ltd	24835	0.7	266	0.36

### Promoter Past Shareholding

Company Name	Dec-15	Dec-16	Dec-17	Dec-18	Dec-19	Mar-20	Jun-20	Sep-20
Dhunseri Tea & Industries Limited	61.28	66.25	66.25	67.13	67.13	67.13	67.13	68.39

### Technical Chart



### Observations

- Promoter bought 0.36% at an average price of 266
- Anil Goel owns 1.3%

## Jagsonpal Pharmaceuticals Ltd.

Jagsonpal Pharmaceuticals is primarily engaged in the manufacturing and trading of pharmaceutical products and APIs. The Company has operations in India and caters to both domestic and international markets.

Market Cap - ₹ 174 Cr.

### Promoter buying details

Company Name	Shares Acquired	Value Acquired (Cr.)	Rate	% Acquired
Jagsonpal Pharmaceuticals Ltd.	92709	0.6	62	0.35

### Promoter Past Shareholding

Company Name	Dec-15	Dec-16	Dec-17	Dec-18	Dec-19	Mar-20	Jun-20	Sep-20
Jagsonpal Pharmaceuticals Limited	0	69.17	69.17	70.12	70.34	70.34	70.34	70.34

### Technical Chart



### Observations

- \_Designate person bought 0.35% equity from open market in November 2020

## Madhav Marbles & Granites Ltd.

Madhav Marbles and Granites is engaged in manufacturing, processing and trading of granite slabs/tiles, marble slabs/tiles, mill power generation and realty business.

Market Cap - ₹ 28.8 Cr.

### Promoter buying details

Company Name	Shares Acquired	Value Acquired (Cr.)	Rate	% Acquired
Madhav Marbles & Granites Ltd.	28454	0.1	29	0.33

### Promoter Past Shareholding

Company Name	Dec-15	Dec-16	Dec-17	Dec-18	Dec-19	Mar-20	Jun-20	Sep-20
Madhav Marbles and Granites Limited	38.26	38.01	37.6	38.23	39.61	40.35	40.35	40.5

### Technical Chart



### Observations

- An increase of 0.89% in last 4 quarters and 0.33% in last month

## Bright Brothers Ltd

Bright Brothers is engaged in the business of manufacturing injection moulded plastics products for supplies to Original Equipment Manufacturers for Consumer Durable Industry and market its own products under Brite brand for material handling crates

Market Cap - ₹ 41.6 Cr

### Promoter buying details

Company Name	Shares Acquired	Value Acquired (Cr.)	Rate	% Acquired
Bright Brothers Ltd	17402	0.1	67	0.31

### Promoter Past Shareholding

Company Name	Dec-15	Dec-16	Dec-17	Dec-18	Dec-19	Mar-20	Jun-20	Sep-20
BRIGHT BROTHERS LTD.-\$	50.36	50.36	50.37	50.37	52.44	52.9	53.13	53.15

### Technical Chart



### Observations

- Promoter bought 0.31%

## Mangalore Chemicals & Fertilizers Ltd.

Mangalore Chemicals & Fertilizers Limited is engaged in the business of manufacture, purchase and sale of fertilizers. The Company manufactures both nitrogenous and phosphatic fertilizers

Market Cap - ₹ 487 Cr

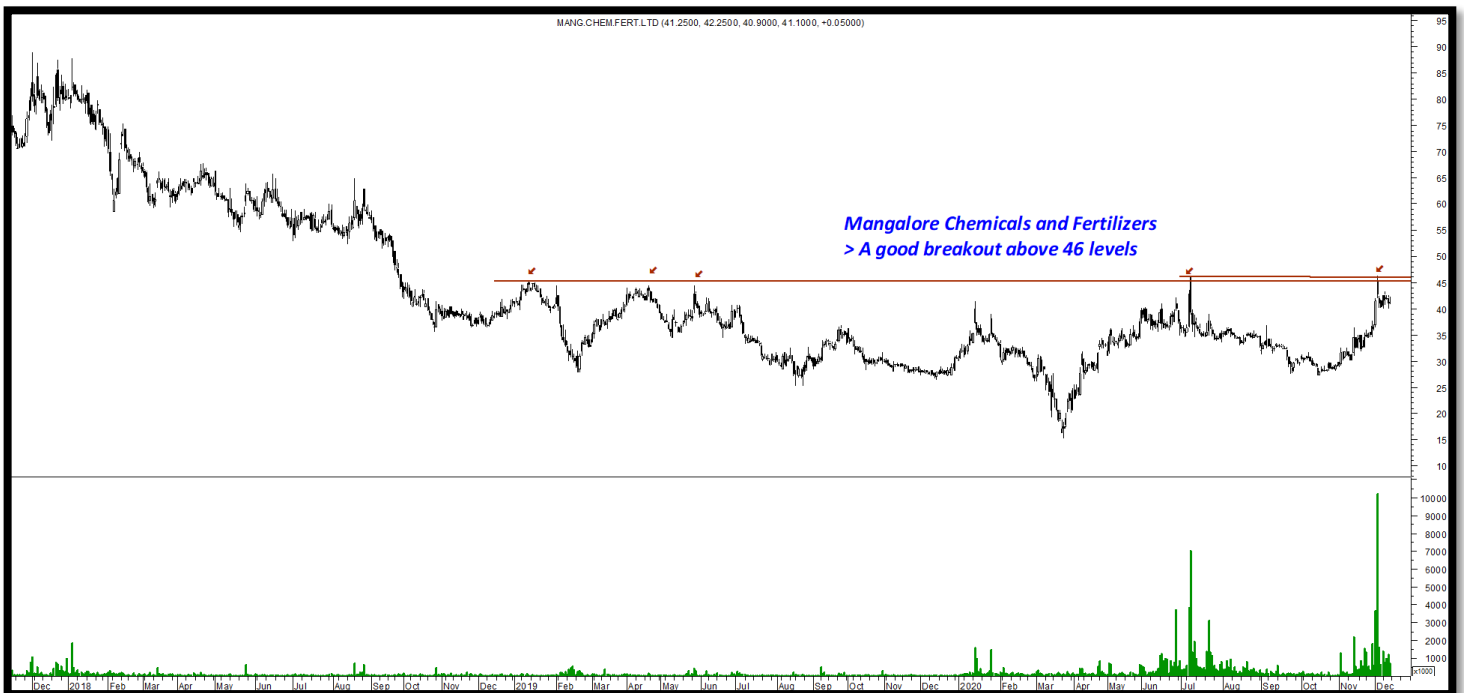
### Promoter buying details

Company Name	Shares Acquired	Value Acquired (Cr.)	Rate	% Acquired
Mangalore Chemicals & Fertilizers Ltd.	363346	1.2	34	0.31

### Promoter Past Shareholding

Company Name	Dec-15	Dec-16	Dec-17	Dec-18	Dec-19	Mar-20	Jun-20	Sep-20
Mangalore Chemicals & Fertilizers Limited	75	75	75	61.1	56.61	56.88	58.32	59.67

### Technical Chart



### Observations

- Promoter stake increased from 56.61% in Dec 2019 to 59.67% in Sep 2020
- Promoter added 0.31% more in November 2020
- Recovery officer selling shares at 40-42 odd levels (They still hold 90k shares)

## Vardhman Special Steels Ltd.

Vardhman Special Steels is engaged in manufacturing of Billets, Steel bars & Rods and Bright Bars of various categories of special and alloy steels.

Market Cap - ₹ 478 Cr.

### Promoter buying details

Company Name	Shares Acquired	Value Acquired (Cr.)	Rate	% Acquired
Vardhman Special Steels Ltd.	118309	1.1	94	0.3

### Promoter Past Shareholding

Company Name	Dec-15	Dec-16	Dec-17	Dec-18	Dec-19	Mar-20	Jun-20	Sep-20
Vardhman Special Steels Limited	74.97	74.97	72.8	66.59	58.97	59.18	59.18	59.34

### Technical Chart



### Observations

- 0.16% increase last quarter and 0.3% increase this quarter
- DSP Smallcap owns 4.42%
- Mukul Agarwal holds 1.24% and Anil goel owns 3.29%

## Rama Steel Tubes Ltd

Rama Steel Tubes Limited is an India-based company engaged in manufacturing and trading of steel pipes.

Market Cap - ₹ 82.1 Cr

### Promoter buying details

Company Name	Shares Acquired	Value Acquired (Cr.)	Rate	% Acquired
Rama Steel Tubes Ltd	48591	0.2	47	0.29

### Promoter Past Shareholding

Company Name	Dec-15	Dec-16	Dec-17	Dec-18	Dec-19	Mar-20	Jun-20	Sep-20
Rama Steel Tubes Limited	73.95	63.9	61.35	60.28	61.16	61.28	61.29	61.77

### Technical Chart



### Observations

- 0.29% addition in latest month and 0.48% increase last quarter

## Amal Ltd.

Amal is engaged in manufacturing and marketing of bulk chemicals such as Sulphuric acid and Oleum and their downstream products such as Sulphur dioxide and Sulphur trioxide

Market Cap - ₹ 182 Cr.

### Promoter buying details

Company Name	Shares Acquired	Value Acquired (Cr.)	Rate	% Acquired
Amal Ltd.	27365	0.5	175	0.29

### Promoter Past Shareholding

Company Name	Dec-15	Dec-16	Dec-17	Dec-18	Dec-19	Mar-20	Jun-20	Sep-20
AMAL LTD.	52.23	53.73	65.51	65.51	65.54	65.54	65.54	65.6

### Technical Chart



### Observations

- 0.3% increase in current month
- Stock near All time high



## Wpil Ltd.

WPIL is principally engaged in designing, developing, manufacturing, erecting, commissioning and servicing of pumps & pumping systems.

Market Cap - ₹ 537 Cr.

### Promoter buying details

Company Name	Shares Acquired	Value Acquired (Cr.)	Rate	% Acquired
Wpil Ltd.	26202	1.2	459	0.26

### Promoter Past Shareholding

Company Name	Dec-15	Dec-16	Dec-17	Dec-18	Dec-19	Mar-20	Jun-20	Sep-20
WPIL LTD.	61.07	61.07	64.08	68.82	69.29	69.38	69.38	69.75

### Technical Chart



### Observations

- Increase in volumes
- Promoter buying at 460
- 0.26% acquisition

## Investment & Precision Castings Ltd.

Investment & Precision Castings is engaged in the production of investment castings.

Market Cap - ₹ 90.4 Cr.

### Promoter buying details

Company Name	Shares Acquired	Value Acquired (Cr.)	Rate	% Acquired
Investment & Precision Castings Ltd.	12640	0.2	154	0.26

### Promoter Past Shareholding

Company Name	Dec-15	Dec-16	Dec-17	Dec-18	Dec-19	Mar-20	Jun-20	Sep-20
INVESTMENT & PRECISION CASTINGS LTD.	49.48	50.01	50.01	50.07	50.27	50.27	50.34	50.34

### Technical Chart



### Observations

- Increase in volumes
- 1 year consolidation on charts

## Godfrey Phillips India Ltd.

Godfrey Phillips India is engaged in manufacturing of cigarettes, tobacco products and chewing products and in trading of tobacco products, and other retail products

Market Cap - ₹ 5,284 Cr.

### Promoter buying details

Company Name	Shares Acquired	Value Acquired (Cr.)	Rate	% Acquired
Godfrey Phillips India Ltd.	129671	11.5	889	0.25

### Promoter Past Shareholding

Company Name	Dec-15	Dec-16	Dec-17	Dec-18	Dec-19	Mar-20	Jun-20	Sep-20
Godfrey Phillips India Limited	72.06	72.06	72.19	72.19	72.19	72.19	72.19	72.28

### Technical Chart



### Observations

- Range bound
- Promoter buying at 890

## Nrb Bearings Ltd.

NRB Bearings is engaged in the business of manufacture of ball and roller bearings.

Market Cap - ₹ 864 Cr.

### Promoter buying details

Company Name	Shares Acquired	Value Acquired (Cr.)	Rate	% Acquired
Nrb Bearings Ltd.	292369	2.4	83	0.25

### Promoter Past Shareholding

Company Name	Dec-15	Dec-16	Dec-17	Dec-18	Dec-19	Mar-20	Jun-20	Sep-20
NRB Bearing Limited	55.33	54.66	54.09	52.67	48.51	48.74	48.76	49.05

### Technical Chart



### Observations

- Good chart structure
- 0.25% addition in promoter holding at avg price of 83

## Vardhman Textiles Ltd.

Vardhman Textiles is engaged in the business of manufacturing of cotton yarn, synthetic yarn and woven fabric.

Market Cap - ₹ 5,621 Cr.

### Promoter buying details

Company Name	Shares Acquired	Value Acquired (Cr.)	Rate	% Acquired
Vardhman Textiles Ltd.	140827	12.4	882	0.25

### Promoter Past Shareholding

Company Name	Dec-15	Dec-16	Dec-17	Dec-18	Dec-19	Mar-20	Jun-20	Sep-20
Vardhman Textiles Limited	61.92	62.23	62.3	62.14	62.21	62.2	62.2	62.24

### Technical Chart



### Observations

- Traction in textile stocks
- 0.25% increase in promoter holding
- Small volume accumulation seen

## Jindal Drilling & Industries Ltd.

Jindal Drilling & Industries is engaged in providing services to entities involved in exploration of Oil & Gas.

Market Cap - ₹ 281 Cr.

### Promoter buying details

Company Name	Shares Acquired	Value Acquired (Cr.)	Rate	% Acquired
Jindal Drilling & Industries Ltd.	67000	0.5	77	0.23

### Promoter Past Shareholding

Company Name	Dec-15	Dec-16	Dec-17	Dec-18	Dec-19	Mar-20	Jun-20	Sep-20
Jindal Drilling And Industries Limited	63.71	64.03	63.8	66.02	67.19	67.19	67.19	67.19

### Technical Chart



### Observations

- Small volumes increase seen
- Promoter bought 67k shares at avg rate of 77

## Man Infraconstruction Ltd.

Man Infraconstruction Ltd is engaged in the business of civil construction.

Market Cap - ₹ 808 Cr.

### Promoter buying details

Company Name	Shares Acquired	Value Acquired (Cr.)	Rate	% Acquired
Man Infraconstruction Ltd.	300000	0.9	30	0.2

### Promoter Past Shareholding

Company Name	Dec-15	Dec-16	Dec-17	Dec-18	Dec-19	Mar-20	Jun-20	Sep-20
Man Infraconstruction Limited	59.66	61.76	63.16	64.01	64.32	64.58	64.58	65.22

### Technical Chart



### Observations

- 0.64% added in last quarter and 0.2% increase in this quarter
- Huge volume spikes

## Repro India Ltd.

Repro India Limited is a provider of content, print and fulfillment solutions. The Company is engaged in printing of magazines and other periodicals, books and brochures, maps, atlases, posters and others

Market Cap - ₹ 465 Cr.

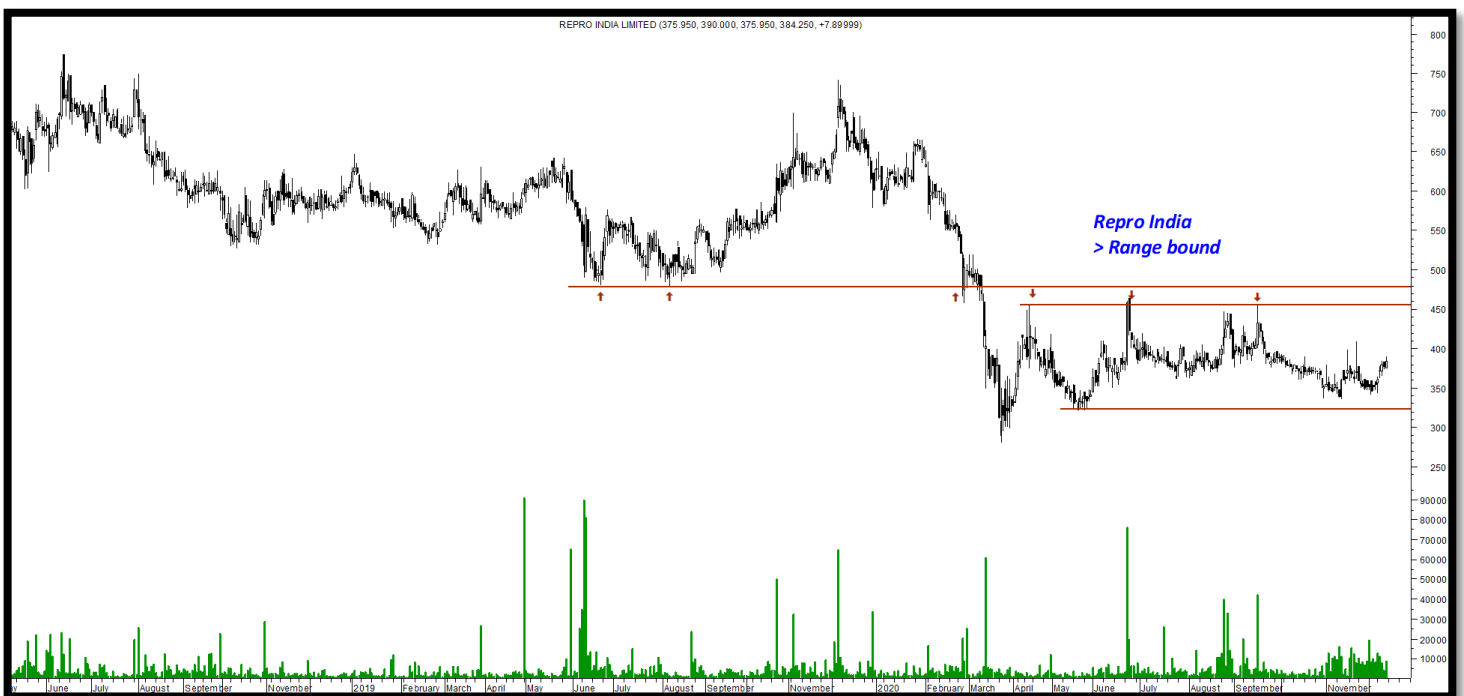
### Promoter buying details

Company Name	Shares Acquired	Value Acquired (Cr.)	Rate	% Acquired
Repro India Ltd.	22349	0.8	359	0.19

### Promoter Past Shareholding

Company Name	Dec-15	Dec-16	Dec-17	Dec-18	Dec-19	Mar-20	Jun-20	Sep-20
Repro India Limited	62.07	61.7	55.31	55.33	52.66	52.66	52.66	52.66

### Technical Chart



### Observations

- Range bound movement
- Promoter buying at 360 acquiring 0.19% stake



## Greenply Industries Ltd.

Greenply Industries is engaged in the business of manufacturing of plywood and trading of plywood, wallcovers and allied products.

Market Cap - ₹ 1,396 Cr.

### Promoter buying details

Company Name	Shares Acquired	Value Acquired (Cr.)	Rate	% Acquired
Greenply Industries Ltd.	217973	2.0	93	0.18

### Promoter Past Shareholding

Company Name	Dec-15	Dec-16	Dec-17	Dec-18	Dec-19	Mar-20	Jun-20	Sep-20
Greenply Industries Limited	55	54.13	51.03	51.03	51.8	52.01	52.02	52.02

### Technical Chart



### Observations

- Huge volume action seen
- Westbridge fund and Jwalamukhi investment sold stakes
- Promoter bought at 93
- Almost all selling over.

## Chembond Chemicals Ltd.

Chembond Chemicals is engaged in the Business of Manufacturing of Chemicals and Chemical products.

Market Cap - ₹ 218 Cr.

### Promoter buying details

Company Name	Shares Acquired	Value Acquired (Cr.)	Rate	% Acquired
Chembond Chemicals Ltd	20754	0.3	160	0.17

### Promoter Past Shareholding

Company Name	Dec-15	Dec-16	Dec-17	Dec-18	Dec-19	Mar-20	Jun-20	Sep-20
Chembond Chemicals Ltd	68.71	69.48	66.92	63.89	64.59	64.59	65.35	65.5

### Technical Chart



### Observations

- 1% increase in stake since March 2020

## Surya Roshni Ltd.

Surya Roshni is engaged in the largest GI Steel Pipe Manufacturer and the second largest in lighting products in India.

Market Cap - ₹ 1,789 Cr.

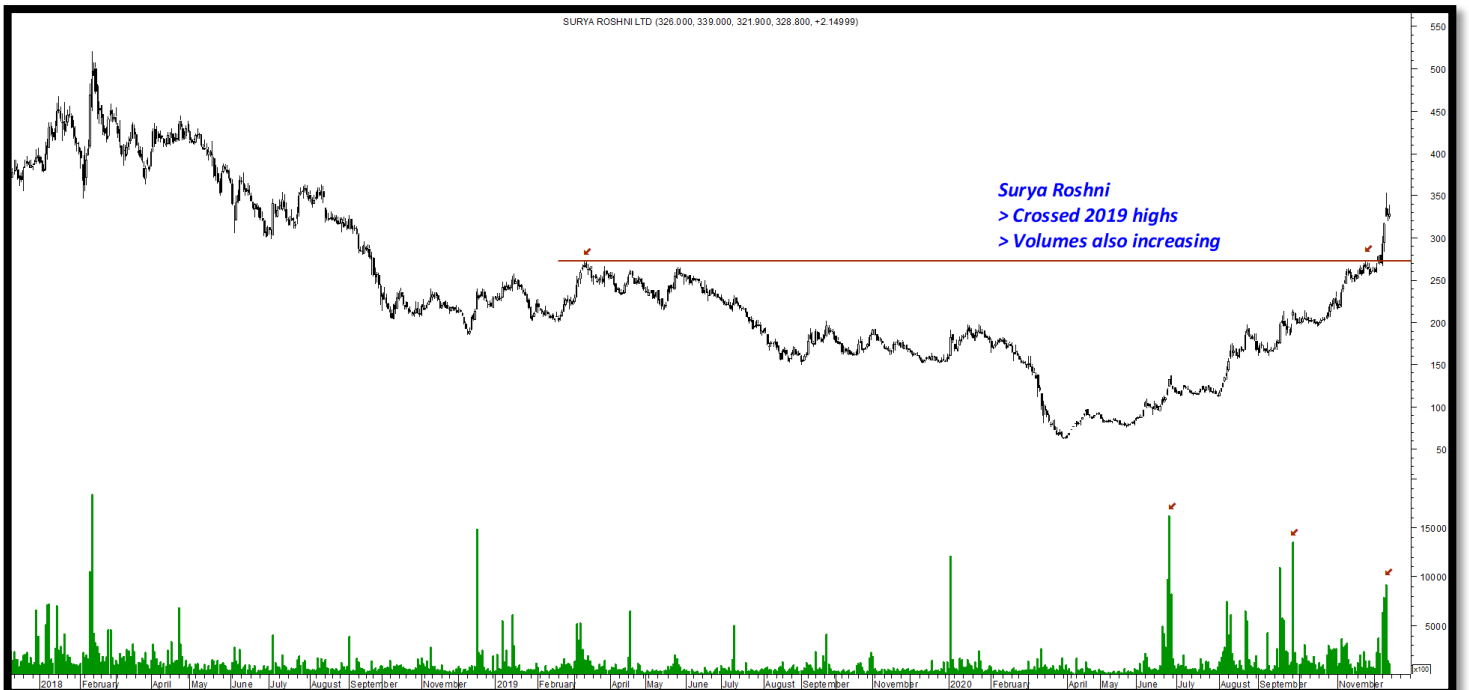
### Promoter buying details

Company Name	Shares Acquired	Value Acquired (Cr.)	Rate	% Acquired
Surya Roshni Ltd.	100600	2.5	251	0.17

### Promoter Past Shareholding

Company Name	Dec-15	Dec-16	Dec-17	Dec-18	Dec-19	Mar-20	Jun-20	Sep-20
Surya Roshni Limited	63.32	63.32	63.32	62.9	62.9	62.9	62.9	62.92

### Technical Chart



### Observations

- Promoter bought 0.17% stake
- Increasing volumes

## Ador Fontech Ltd.

Ador Fontech is a Frontrunner Organisation That Operates on the Philosophy of Partnering With Its Clients In Recommending and Implementing Value-Added Reclamation, Fusion, Surfacing, Spraying and Environmental Solutions.

Market Cap - ₹ 125 Cr.

### Promoter buying details

Company Name	Shares Acquired	Value Acquired (Cr.)	Rate	% Acquired
Ador Fontech Ltd	61400	0.2	32	0.17

### Promoter Past Shareholding

Company Name	Dec-15	Dec-16	Dec-17	Dec-18	Dec-19	Mar-20	Jun-20	Sep-20
ADOR FONTECH LTD.-\$	35.74	36.15	36.43	37.15	37.56	37.6	37.62	38.81

### Technical Chart



### Observations

- 0.17% added in November month and 1.19% in last quarter

## Firstsource Solutions Ltd.

Firstsource Solutions is engaged in the business of providing customer management services like contact center, transaction processing and debt collection services including revenue cycle management in the healthcare industry.

Market Cap - ₹ 5,217 Cr.

### Promoter buying details

Company Name	Shares Acquired	Value Acquired (Cr.)	Rate	% Acquired
Firstsource Solutions Ltd.	1138249	8.2	72	0.16

### Promoter Past Shareholding

Company Name	Dec-15	Dec-16	Dec-17	Dec-18	Dec-19	Mar-20	Jun-20	Sep-20
Firstsource Solutions Limited	55.59	55.16	54.57	54.13	53.92	53.9	53.89	53.82

### Technical Chart



### Observations

- Employee benefit trust added 0.16% stake
- Near big breakout on charts

## Bhageria Industries Ltd.

Bhageria Industries is engaged in manufacturing of Dyes & Dyes Intermediate and generation and distribution of solar power.

Market Cap - ₹ 707 Cr.

### Promoter buying details

Company Name	Shares Acquired	Value Acquired (Cr.)	Rate	% Acquired
Bhageria Industries Ltd	65905	0.9	131	0.15

### Promoter Past Shareholding

Company Name	Dec-15	Dec-16	Dec-17	Dec-18	Dec-19	Mar-20	Jun-20	Sep-20
Bhageria Industries Limited	48.73	49.9	52.64	70.48	70.48	70.48	70.48	70.48

### Technical Chart



### Observations

- Promoter buying after long time
- Long term trend change on charts

## Kriti Industries (India) Ltd.

Kriti Industries (India) is engaged in the business of Manufacture of other plastics products

Market Cap - ₹ 191 Cr.

### Promoter buying details

Company Name	Shares Acquired	Value Acquired (Cr.)	Rate	% Acquired
Kriti Industries (India) Ltd	70990	0.2	33	0.14

### Promoter Past Shareholding

Company Name	Dec-15	Dec-16	Dec-17	Dec-18	Dec-19	Mar-20	Jun-20	Sep-20
KRITI INDUSTRIES (INDIA) LTD.-\$	65.76	65.76	65.76	65.76	65.98	66.13	66.13	66.16

### Technical Chart



### Observations

- Small nibbling by promoters
- Bought at avg price of 33

## Sarla Performance Fibers Ltd

Sarla Performance Fibers is engaged in the business of primarily in manufacturing of various types of polyester and nylon yarns.

Market Cap - ₹ 179 Cr.

### Promoter buying details

Company Name	Shares Acquired	Value Acquired (Cr.)	Rate	% Acquired
Sarla Performance Fibers Ltd	110000	0.2	19	0.14

### Promoter Past Shareholding

Company Name	Dec-15	Dec-16	Dec-17	Dec-18	Dec-19	Mar-20	Jun-20	Sep-20
Sarla Performance Fibers Limited	0	55.23	55.19	54.31	54.88	54.94	54.94	54.94

### Technical Chart



### Observations

- Textile stocks on radar
- Volumes spikes
- Promoter bought some at 19rs.



## Cantabil Retail India Ltd.

Cantabil Retail India is engaged in the business of Manufacture of all types of textile garments and clothing accessories ,Retail sale of readymade garments, hosiery goods, other articles of clothing and clothing accessories such as gloves, ties, braces etc.

Market Cap - ₹ 575 Cr

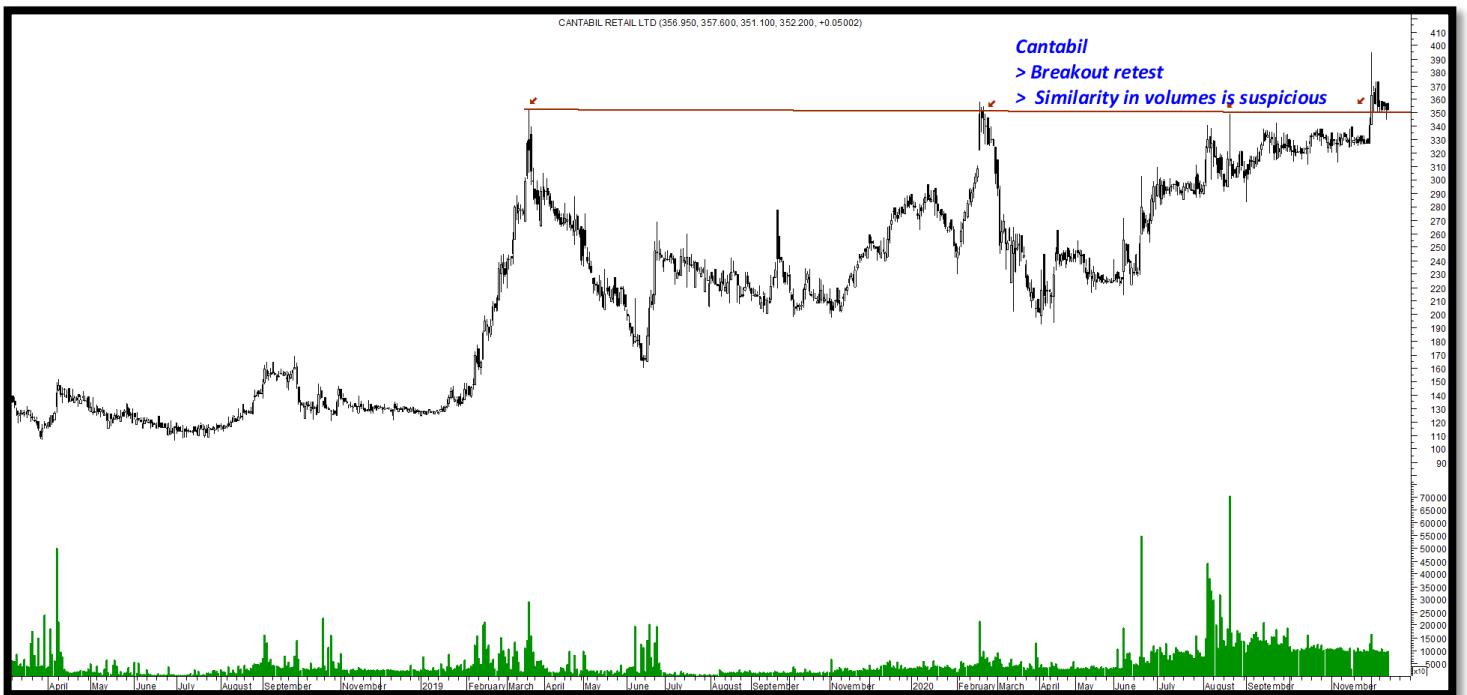
### Promoter buying details

Company Name	Shares Acquired	Value Acquired (Cr.)	Rate	% Acquired
Cantabil Retail India Ltd.	21807	0.7	337	0.12

### Promoter Past Shareholding

Company Name	Dec-15	Dec-16	Dec-17	Dec-18	Dec-19	Mar-20	Jun-20	Sep-20
Cantabil Retail India Limited	70.68	74.23	74.23	74.23	74.23	74.23	74.23	74.23

### Technical Chart



### Observations

- Volumes look fishy. Low del volumes.
- Price action is strong
- 0.12% acquired in November 2020

## Pudumjee Paper Products Ltd

Pudumjee Paper Products is engaged in mainly belongs to Paper Industry and operates in Speciality Paper segment for Wrapping and Food Grade Packaging Paper, household and Sanitary Paper etc.

Market Cap - ₹ 215 Cr.

### Promoter buying details

Company Name	Shares Acquired	Value Acquired (Cr.)	Rate	% Acquired
Pudumjee Paper Products Ltd	112248	0.2	19	0.12

### Promoter Past Shareholding

Company Name	Dec-15	Dec-16	Dec-17	Dec-18	Dec-19	Mar-20	Jun-20	Sep-20
Pudumjee Paper Products Limited	0	66.89	66.89	67.11	67.11	67.11	67.11	67.69

### Technical Chart



### Observations

- 0.58% added in last quarter
- Promoter bought 30lk shares in october and 1.12lk shares in novemeber

## Everest Organics Ltd.

Everest Organics is engaged in the business of Manufacture of Active Pharmaceutical Ingredients & Intermediaries.

Market Cap - ₹ 210 Cr.

### Promoter buying details

Company Name	Shares Acquired	Value Acquired (Cr.)	Rate	% Acquired
Everest Organics Ltd.	8682	0.2	228	0.11

### Promoter Past Shareholding

Company Name	Dec-15	Dec-16	Dec-17	Dec-18	Dec-19	Mar-20	Jun-20	Sep-20
EVEREST ORGANICS LTD.	34.97	70.21	73.21	73.27	73.6	73.79	73.79	73.79

### Technical Chart



### Observations

- Small buying by promoters at 228

## Chalet Hotels Ltd

Chalet Hotels is engaged in the business of hospitality (hotels), commercial and retail operations and real estate development

Market Cap - ₹ 3,943 Cr.

### Promoter buying details

Company Name	Shares Acquired	Value Acquired (Cr.)	Rate	% Acquired
Chalet Hotels Ltd	228381	3.8	165	0.11

### Promoter Past Shareholding

Company Name	Dec-15	Dec-16	Dec-17	Dec-18	Dec-19	Mar-20	Jun-20	Sep-20
Chalet Hotels Limited	0	0	0	0	71.41	71.41	71.41	71.41

### Technical Chart



### Observations

- 0.11% acquired by promoters at an avg price of 165
- Chart shows breakout

## Texmaco Infrastructure & Holdings Ltd.

Texmaco Infrastructure & Holdings is engaged in the business of Real Estate, Mini Hydro Power and Job work services.

Market Cap - ₹ 536 Cr.

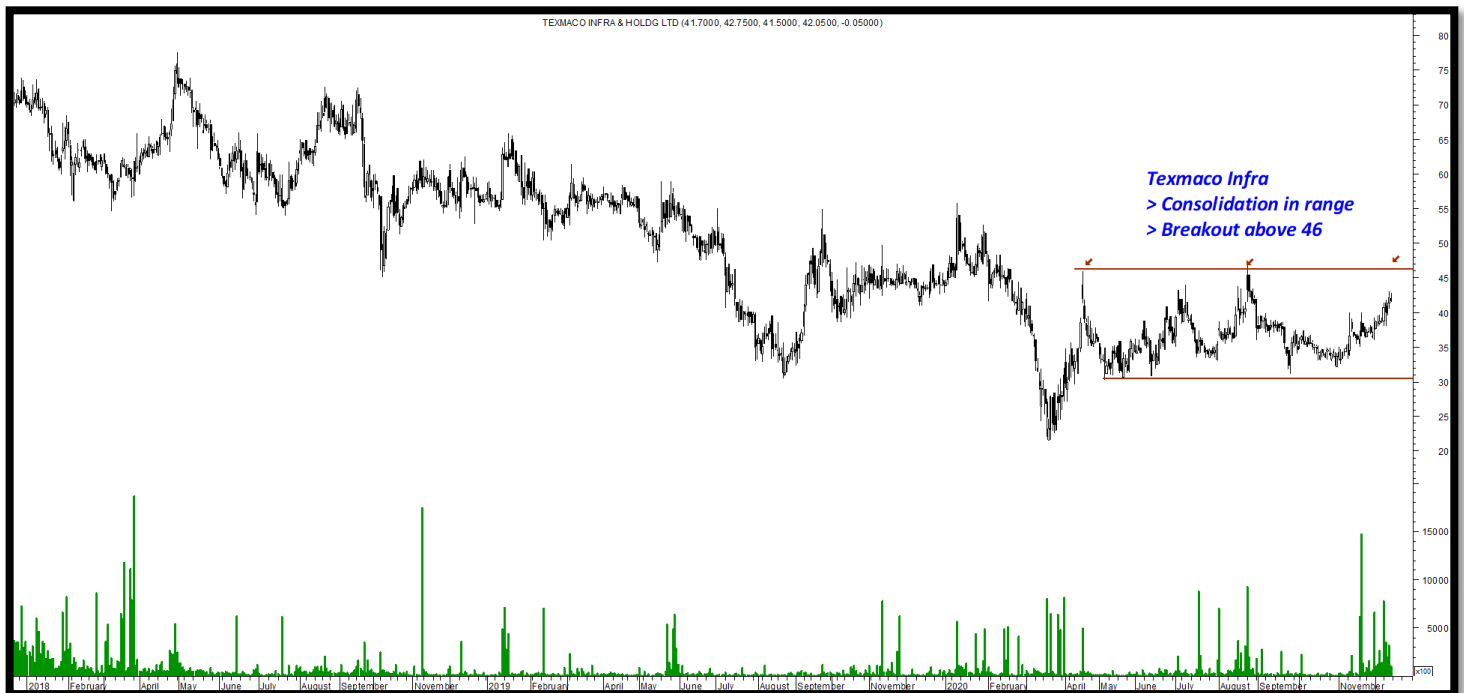
### Promoter buying details

Company Name	Shares Acquired	Value Acquired (Cr.)	Rate	% Acquired
Texmaco Infrastructure & Holdings Ltd.	138964	0.5	40	0.11

### Promoter Past Shareholding

Company Name	Dec-15	Dec-16	Dec-17	Dec-18	Dec-19	Mar-20	Jun-20	Sep-20
Texmaco Infrastructure & Holdings Limited	60.71	60.83	60.83	62.18	63.51	64.16	64.79	64.79

### Technical Chart



### Observations

- Stake increased from 63.51% in Dec 2019 to 64.79% in Sep 2020
- Small buying in November 2020

## Nicco Parks & Resorts Ltd

Nicco Parks & Resorts Limited (NPRL) is engaged in the business of leisure and entertainment. The Company operates amusement parks and theme parks.

Market Cap - ₹ 234 Cr

### Promoter buying details

Company Name	Shares Acquired	Value Acquired (Cr.)	Rate	% Acquired
Nicco Parks & Resorts Ltd	50417	0.2	47	0.11

### Promoter Past Shareholding

Company Name	Dec-15	Dec-16	Dec-17	Dec-18	Dec-19	Mar-20	Jun-20	Sep-20
NICCO PARKS & RESORTS LTD.-\$	62.74	62.74	62.74	62.45	63.06	63.93	63.95	64.65

### Technical Chart



### Observations

- Illiquid scrip
- Near All time high
- Promoter acquired 50k shares around 47 Rs



**Technical View by Nooresh**  
get the **TECH** edge

# Thank You

For any queries

Nooresh Merani

9819225396

[nooreshtech@analyseindia.com](mailto:nooreshtech@analyseindia.com)

[twitter.com/nooreshtech](https://twitter.com/nooreshtech)

[www.nooreshtech.co.in](http://www.nooreshtech.co.in)

DISCLOSURE Nooresh Merani

[www.nooreshtech.co.in](http://www.nooreshtech.co.in)

Securities covered above: Stocks Covered above

SEBI Registration disclosure - Investment Adviser ( **INA000002991** )

Financial Interest:

Nooresh Merani and his family/associates/ analysts do not have exposure in the securities

mentioned in the above report/article.

Nooresh Merani and his family/associates/ analysts do not have any financial interest/beneficial

ownership of more than 1% in the company covered by Analyst.

Nooresh Merani and his family/associates/ analysts have not received any compensation from

the company/third party covered in the above report/article ever.

Nooresh Merani and his family/associates/ analysts has not served as an officer, director or

employee of company covered in the report/article and has not been engaged in market-making

activity of the company covered in the report/article.

**The views expressed are based solely on information available publicly and believed to be**

**true. Investors are advised to independently evaluate the market conditions/risks involved**

**before making any investment decision**

Also read the detailed disclaimer - <http://www.nooreshtech.co.in/disclaimer>